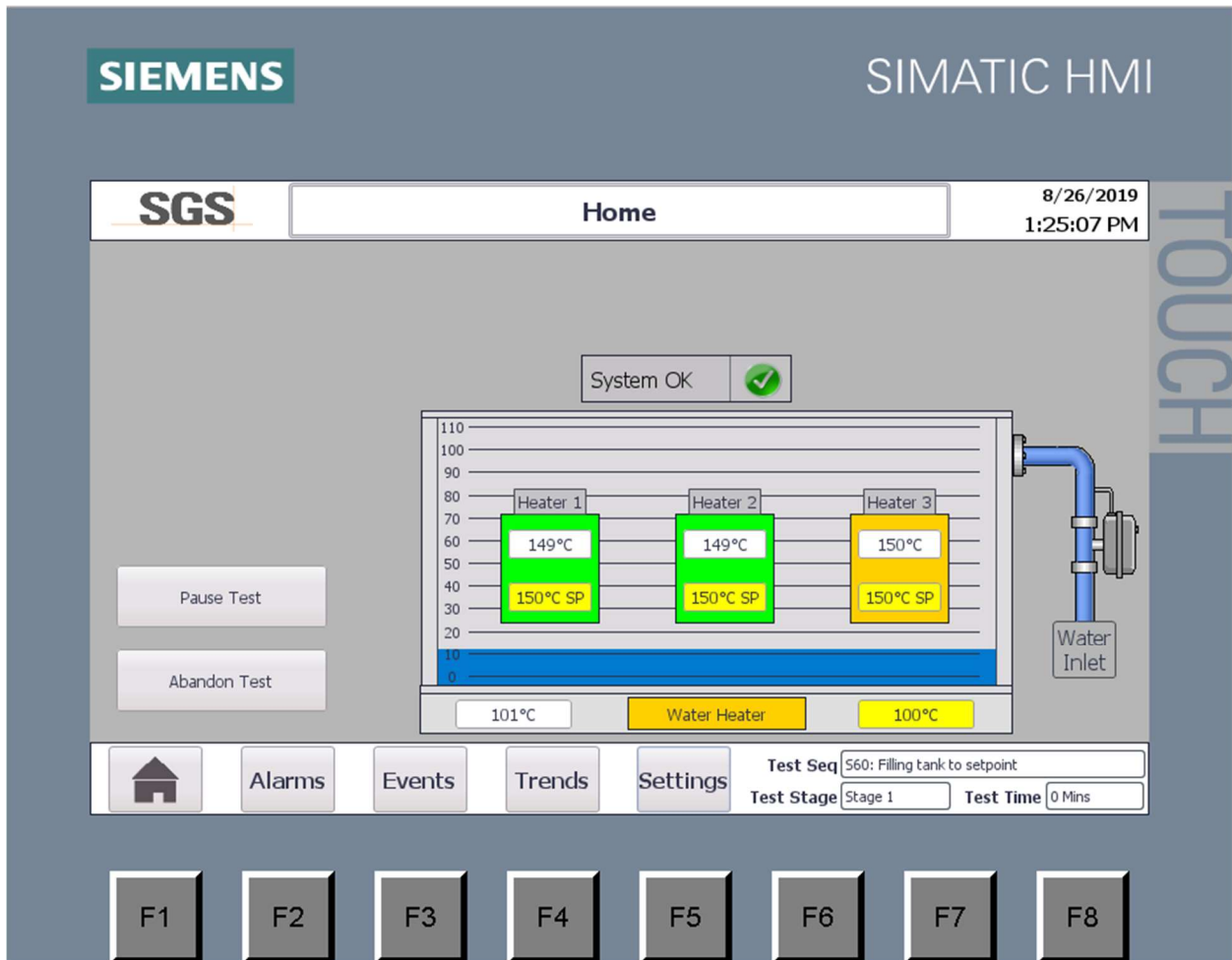




**OPERATING INSTRUCTIONS CUI SYSTEM**



## **1. UNPACKING**

1.1 Remove all packing material and position on a level surface or adjust with the self levelling feet

## **2. MAINS SUPPLY**

2.1 Connect the mains lead via a suitable triple pole and neutral switch fuse as follows.

Connections are:

BROWN Phase 1

BLACK Phase 2

GREY Phase 3

BLUE Neutral

GREEN/YELLOW Earth

2.2 Connect the drain with a ½ in BSP connection and connect the mains water inlet with an isolatable water connection.

### 3. OPERATION

- 3.1 Turn the unit on with the Main Switch
- 3.2 Set the overheat controller (Eurotherm P116) to the desired level
- 3.3 Press home button on the Touch Screen

Screen Layout.....

Each heater shows current temp and Set point. It is highlighted in green when on and yellow when close to set point. If it is not on, it remains grey

Instruction Tag, press to move onto next stage

Manually Add Salt and press OK to continue

System OK

Heater 1: 149°C, 150°C SP

Heater 2: 149°C, 150°C SP

Heater 3: 150°C, 150°C SP

Water Inlet

Inlet valve identification Turns blue when filling Current Water level is shaded in Blue

Information about current test

Test Seq: S40: Manually Add salt solution, press OK

Test Stage: Stage 1

Test Time: 4000 Mins

F1 F2 F3 F4 F5 F6 F7 F8

F1 to F8 Function keys, also work as per the touch screen icon above

3.4 Press start test and the instrument will automatically start at stage 1. The lower left side of the screen highlights what stage the test is at.

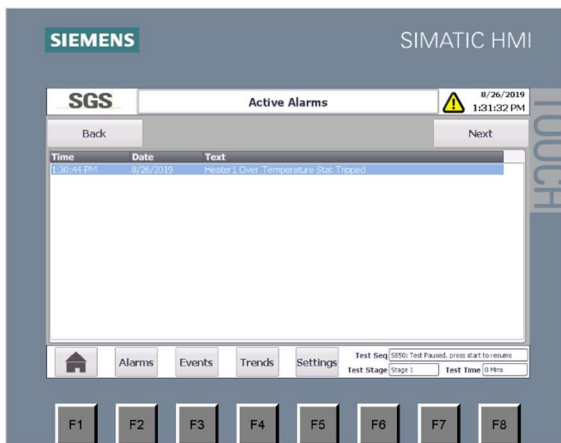
3.5 If manual intervention is required such as manual salt water fill, a message will appear in the top left of the of the screen with instructions and the test will pause until the action is completed

3.6 If you require to change set points during a test, highlight which set point you want to change. The instrument will ask for log in details which is Eng and Eng as shown below

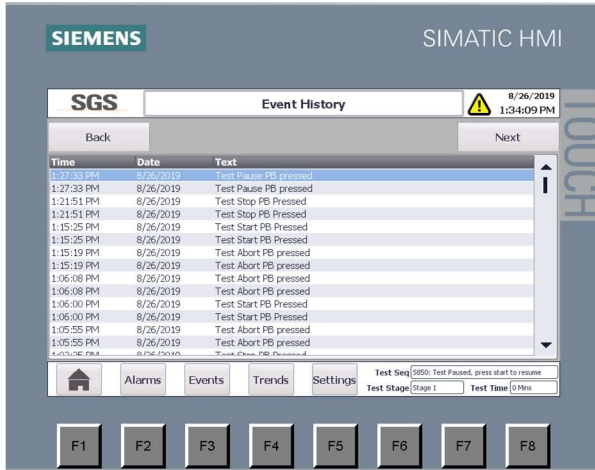


3.7 You can pause and/or abandon the test using the Touch screen commands

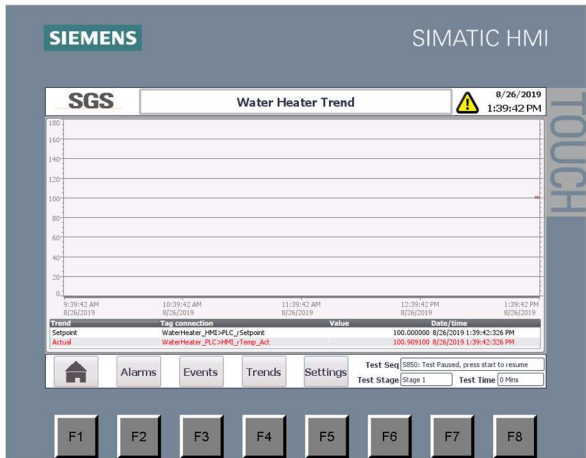
3.8 If an alarm is activated the top right screen will flash in yellow, press the Alarm tag to see the condition, to clear alarms, press F8 key once alarm is deactivated



3.9 All events are logged on the Event Page, press the icon to view

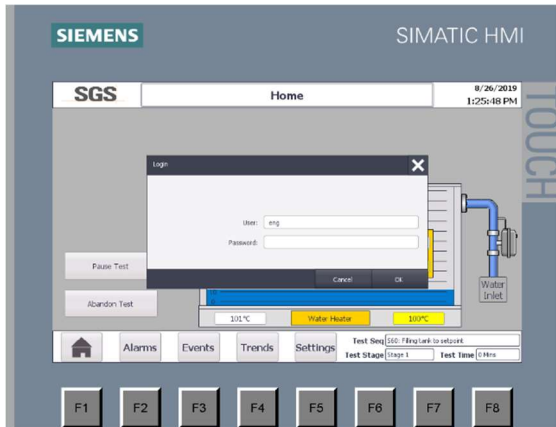


3.10 Trend history of water levels and 4 temperatures are stored. To access press the Trend button and press the input you want to view and the previous 4 hours will be highlighted.

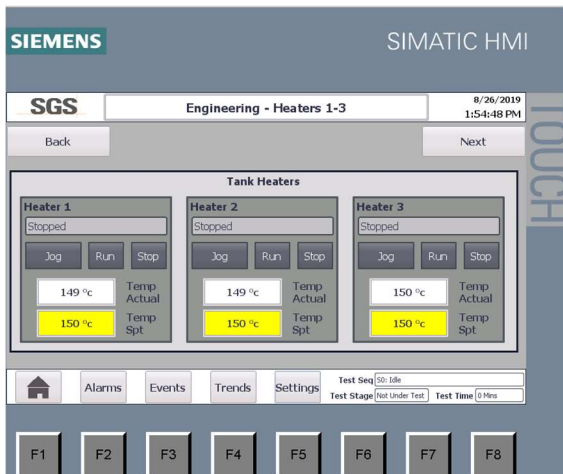


#### 4. MAINTENANCE - ROUTINE CHECKS ON EACH OCCASION OF USE:

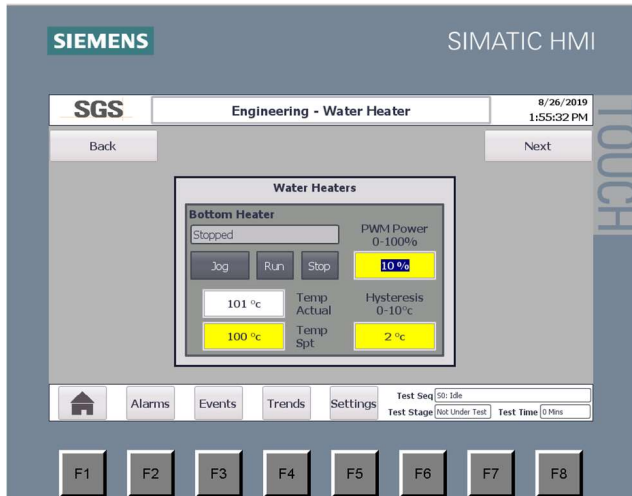
- 4.1 Check the condition of supply lead and plug top. These should be sound and undamaged.
- 4.2 Calibrations & manual control can be done via the 'settings icon'
- 4.3 You need to be in **Manual Control** to change any settings. You need to log on using Eng and Eng password. In the mode, screen will state System in 'Manual Mode'



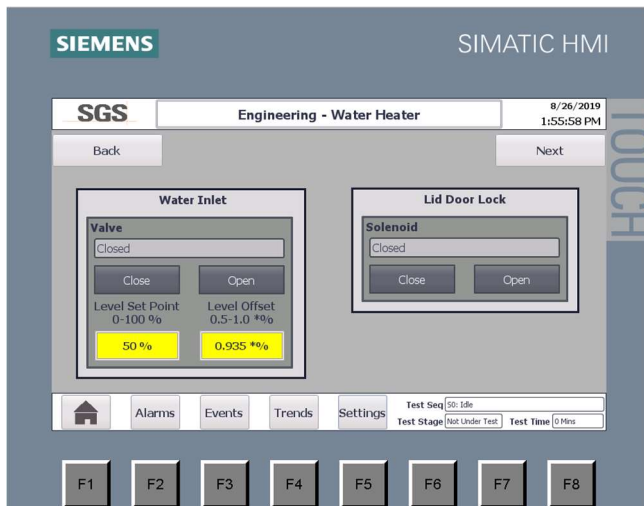
- 4.31 Press a temperature level and highlight the Set Point. Enter the desired set point and press 'Run' and to stop press 'Stop'. Individual heaters can be turned on and off in this way



4.32 With the water heater, these have additional settings such as PWM and Hysteresis. We advise not to change these from the pre-set values of 60% and 2 deg C. Contact your supplier if these have been changed.



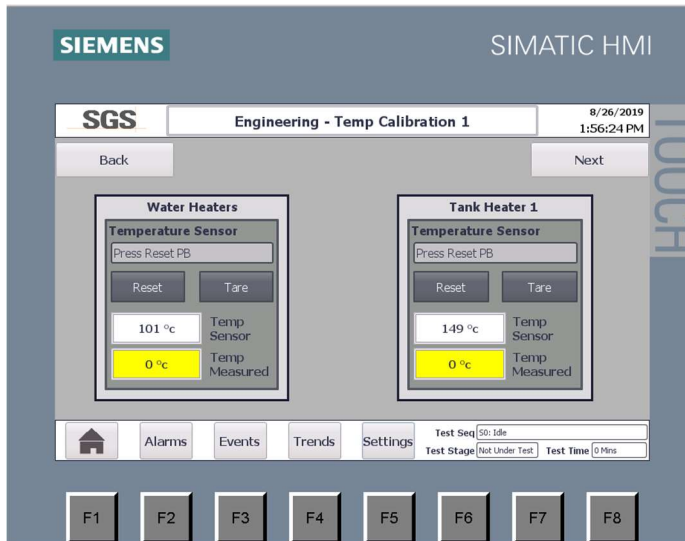
4.33 Water Inlet is the level % the valve will fill to and set at 50% as per test spec. Level offset is a value that compensates for the time the valve takes to close and due to different water pressures and flow rates may need changing. It is a % of the set point when the valve starts to close. To manually fill and close, use the Close / Open icons



4.34 Lid door lock has been deactivated on this model.

4.4 In manual mode only you can calibrate the system.

4.41 Go to Tank heater control icon as above and press the Next icon until calibration is highlighted above. Enter the value you wish to calibrate to using a calibrated instrument and press the Tare button. That channel is now calibrated to the new value



## 5. PREVENTATIVE MAINTENANCE

Ensure that the unit is maintained in a clean, dry condition and when not in use, stored in a normal warm atmosphere. Inbetween each test clean with a suitable detergent to remove any salt excess.

*Minimum recommendation every six months:-*

- 5.1 Check the water inlet and outlet connections are tight and no leaks.
- 5.2 Check the operation of the overheat protection system by raising the desired temperature above the overheat temperature.
- 5.3 Check that the control temperature is maintained within limits. The manufacturer can offer the above service on request.

Note, should you need to open the enclosure to do maintenance or repair, there is a sequence of what panels need to be removed via the panel stickers. Opening these in the incorrect routine may cause the pipes to get pulled of their fittings.